

CP HARBOUR HOUSE

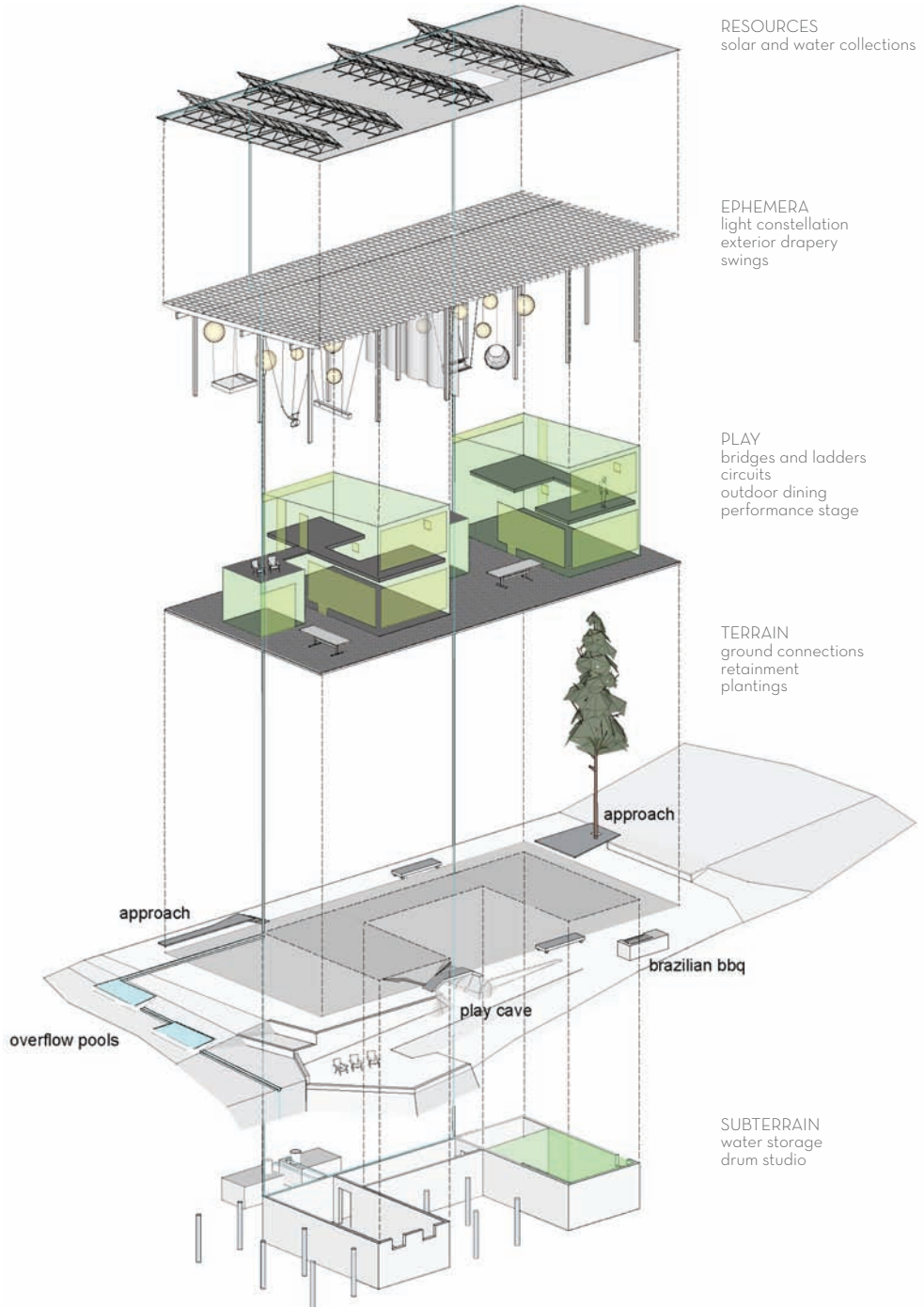
JOHN MCMINN

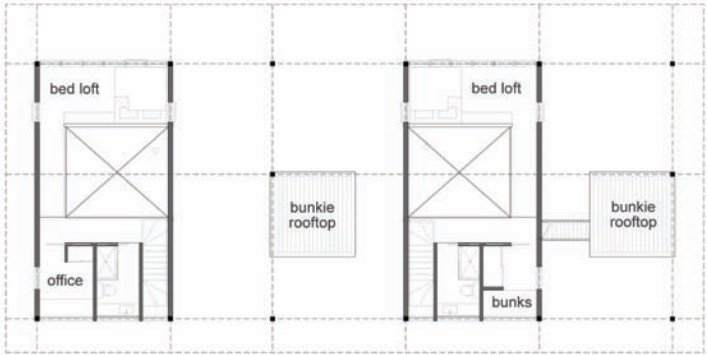
McMinn + Janzen Building Studio

The CP Harbour House is a vacation home for two Toronto households on the shores of Georgian Bay north of Owen Sound, Ontario. Overlooking offshore islands and the limestone cliffs of the Bruce Peninsula, it hovers atop a small harbour, mooring sail and motor boats that connect to nearby island cottages.

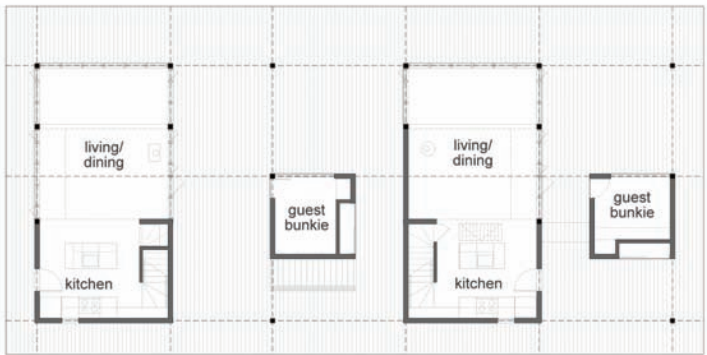
The building is an assembly of four discreet enclosures linked by an expansive deck and roof. Mirrored double storey cabins, are flanked by smaller guest bunks, providing autonomy to the two households; one intensely social with a Latin vibe, the other with a focus on play-scapes for young children. The interior areas are modest, tightly planned for snug winter accommodation, contrasted in summer with expansive outdoor living spaces, under the sweeping protective cover of the roof. The temple-like quality of the post and beam structure provides a flexible armature for hanging seats, swings, beds and lanterns, amplifying both the social events and play functions of the program.

Careful site integration based on building orientation and configuration, is guided by the aim for a net zero carbon footprint, achieved through optimised passive heating, cooling and ventilation, wood burning heat and a large photovoltaic array. Other sustainable products include earthen floors, locally harvested cedar decking and siding, bamboo plywood cabinets, mineral wool and soya based insulation, salvaged thermal glazing, re-used slate countertops and flooring. The photovoltaic array anticipates electric vehicles, addressing the problem of access to and from the city with fossil fuel transportation.





SECOND



GROUND

SITE PLAN



